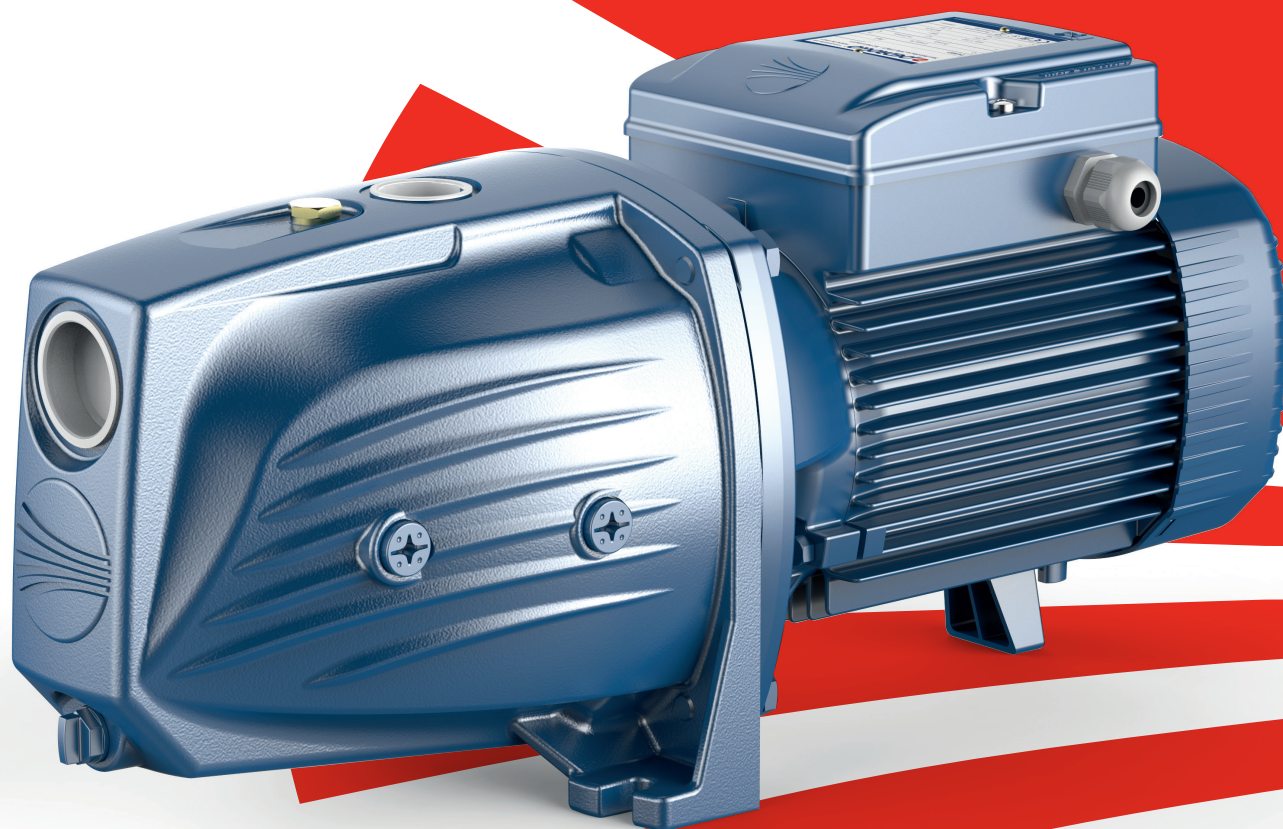



JSW[®]

60 Hz

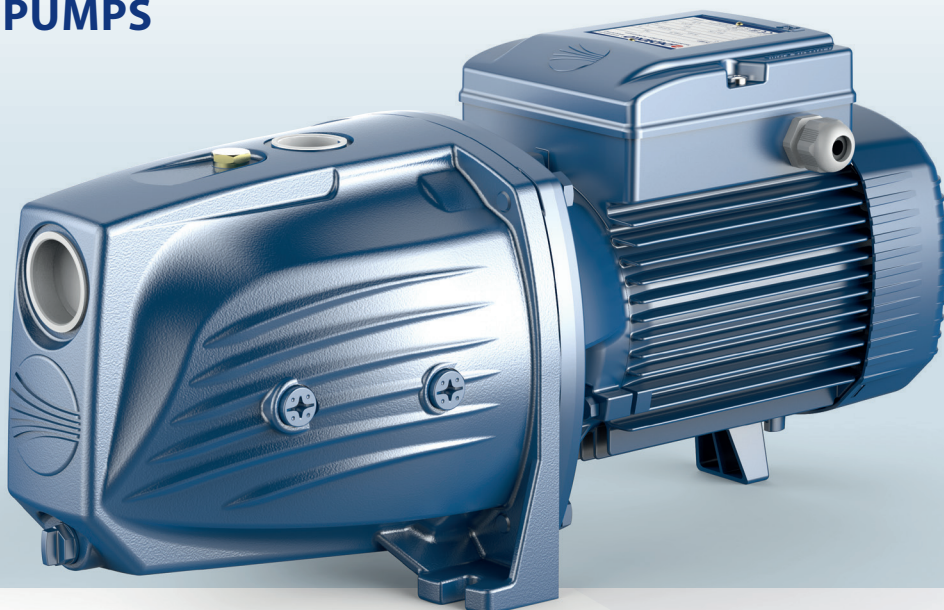
**SELF PRIMING JET
WELL PUMPS**



 **PEDROLLO[®]**
the spring of life

MADE IN ITALY

SELF PRIMING JET WELL PUMPS



-  CLEAN WATER
-  RESIDENTIAL
-  COMMERCIAL
-  INDUSTRIAL

■ INSTALLATION AND USE

JSW self-priming pumps are designed to draw water and liquids that contain air.

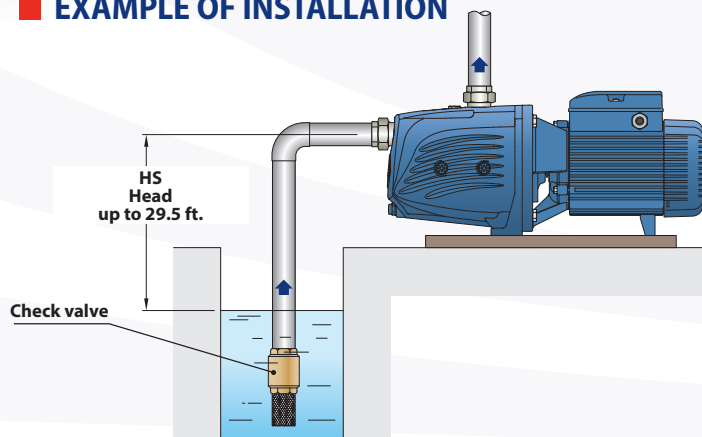
They are reliable and easy to operate. They are a favorite for domestic use, particularly effective for water distribution with small to medium-sized pressure tanks and suitable for irrigation.

PERFORMANCE RANGE	
Max. Flow	31.7 GPM (120 l/min)
Max. Head	177.2 ft. (54 m)
APPLICATION LIMITS	
Manometric Suction Lift	29.5 ft. (9 m) (HS)
Liquid Temp.	14°F - 104°F (-10°C - 40°C)
Ambient Temp. (up to)	104°F (40°C)
Max. Working Pressure	145 PSI (10 bar)

■ ABSORPTION

MODEL	
Single-phase	230 V
JSWm 3CM	9.5 A

■ EXAMPLE OF INSTALLATION



■ CERTIFICATIONS



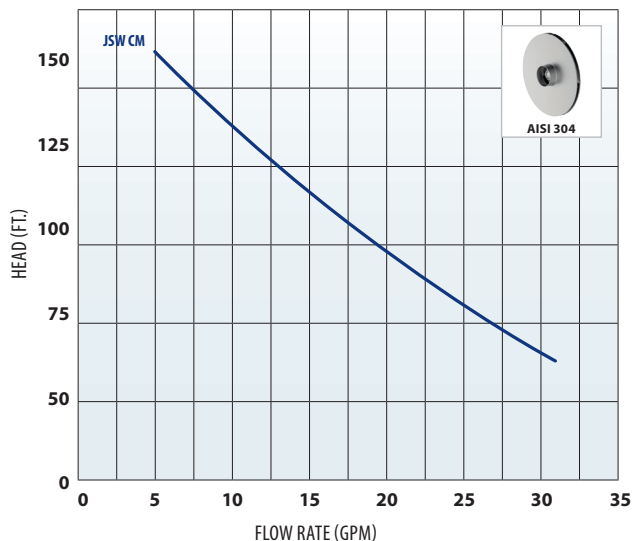
■ PATENTS - TRADEMARKS - MODELS

JSW[®] Registered Trade Mark n. 013073135
Registered Community Model n. 002218610

2 YEAR
LIMITED
WARRANTY

CURVES AND PERFORMANCE DATA

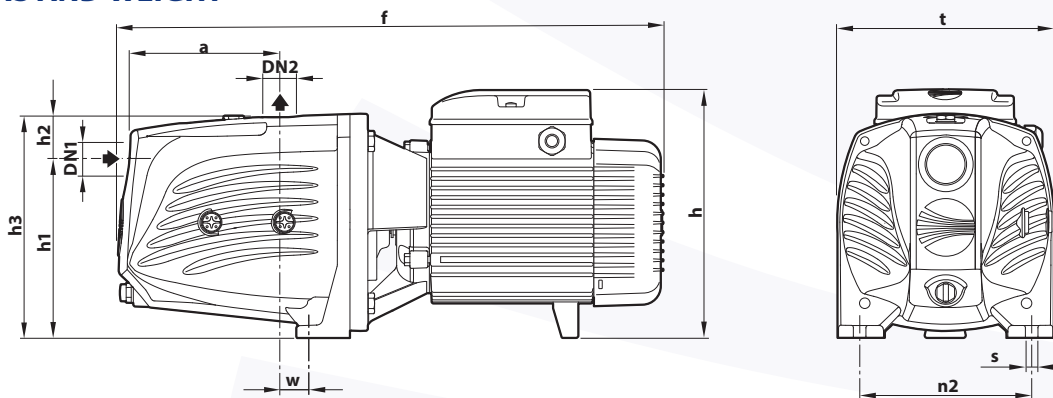
60 Hz



MODEL	MOTOR SIZE		GPM													
	kW	HP		0	2.6	5.3	7.9	10.6	13.2	15.9	18.5	21.1	26.4	31.7		
JSWm 3CM	.75	1	HEAD (FT.)	2.1	-	1.8	1.7	1.5	1.4	1.3	1.2	1.1	0.9	0.8		

Tolerance of characteristic curves in compliance with EN ISO 9906 Grade 3B.

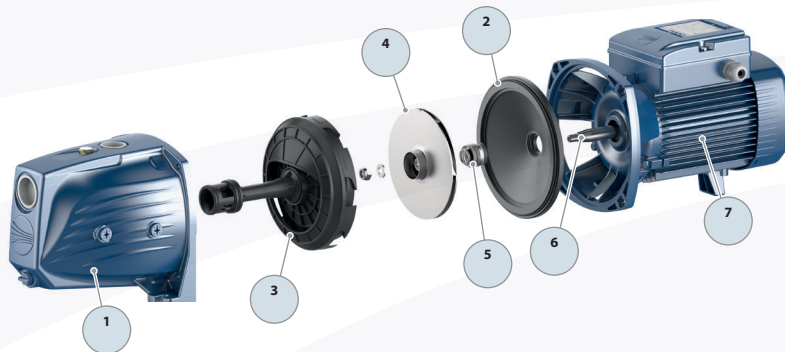
DIMENSIONS AND WEIGHT



MODEL NUMBER	PORTS		DIMENSIONS (IN.)										LBS.
Single-phase	IN	OUT	a	f	h	h1	h2	h3	n2	t	w	s	1~
JSWm 3CM	NPT 1¼ in.	NPT 1 in.	1.24	10.5	7.13	3.62	3.68	7.30	4.72	7.13	2.69	0.35	12.5

CONSTRUCTION FEATURES

#	COMPONENT	CHARACTERISTICS						
1	PUMP BODY	Cast iron with cataphoresis treatment, provided with ISO 228/1 threaded ports						
2	COVER	Cast iron with cataphoresis treatment						
3	EJECTOR UNIT	Noryl [™]						
4	IMPELLER	Stainless steel AISI 304						
5	MECHANICAL SEAL	<table> <tr> <th>SEAL</th><th>SHAFT</th><th>MATERIALS</th></tr> <tr> <td>FN-18</td><td>.7 in.</td><td>Graphite / Ceramic / NBR</td></tr> </table>	SEAL	SHAFT	MATERIALS	FN-18	.7 in.	Graphite / Ceramic / NBR
SEAL	SHAFT	MATERIALS						
FN-18	.7 in.	Graphite / Ceramic / NBR						
6	MOTOR SHAFT	Stainless steel AISI 431						
7	ELECTRIC MOTOR	<ul style="list-style-type: none"> Single-phase 230 V - 60 Hz with winding integrated thermal motor protection Continuous running duty: S1 Insulation: CLASS F Protection rating: IP X4 						





Pedrollo Group USA
45 Maryland Ave. East, St. Paul, MN 55117
customer.service@pedrollogroupusa.com | www.pedrollogroupusa.com
© Pedrollo Group